

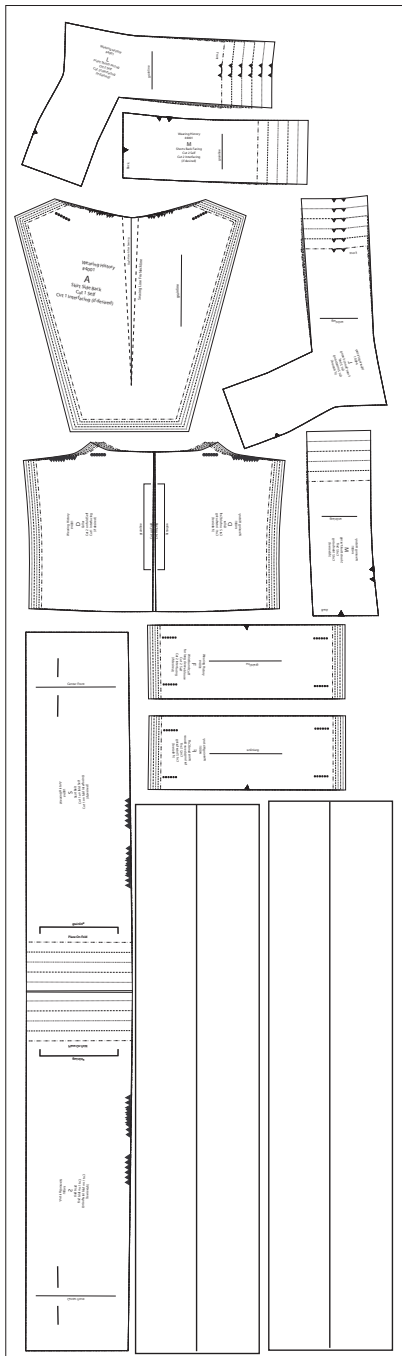
**Supplement to Wearing History
Pattern #4001-
Sailor Girl Play Suit**

This page illustrates yardage requirements and layouts for interfacing.

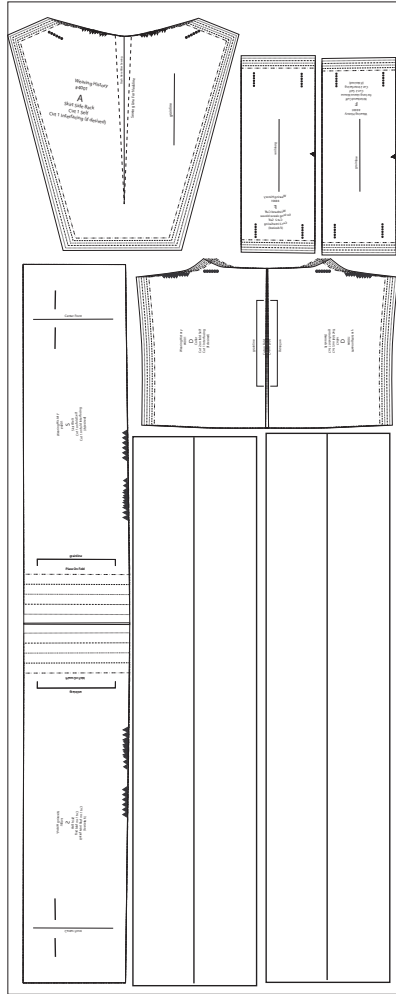
The long rectangular piece with a line down the center is for the front skirt. Cut the interfacing wide enough to back both the buttons and buttonholes. It will extend past the center front line.

If making short sleeve blouse, omit cuffs.

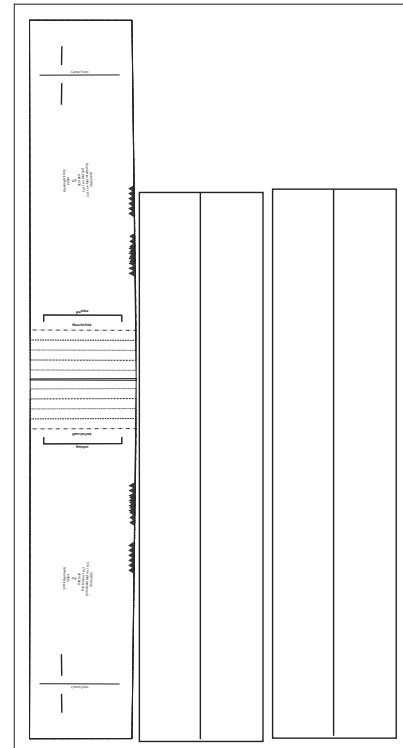
Blouse, Skirt, and Shorts- 20 x 2 yards



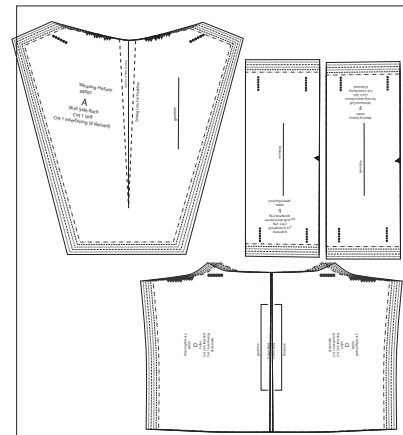
Blouse and Skirt- 20" x 1 3/8 yards



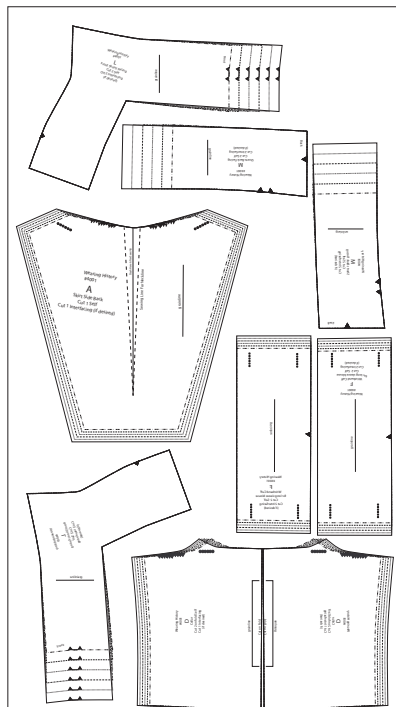
Skirt Only- 20" x 1 1/8 yards



Blouse Only- 20" x 5/8 yards



Blouse and Shorts- 20" x 1 yard



Shorts Only- 20" x 1/2 yard

