

Wearing History

Correction to 4005- 1940's Panties & Bloomers

For patterns purchased before 6/20/16.

- Please remove the crotch piece from your pattern pack and replace with this crotch piece.
- Please tape the lower left and right fronts to the PANTIES FRONT piece for a correction on the notches.

Thank you, and sorry for the inconvenience.

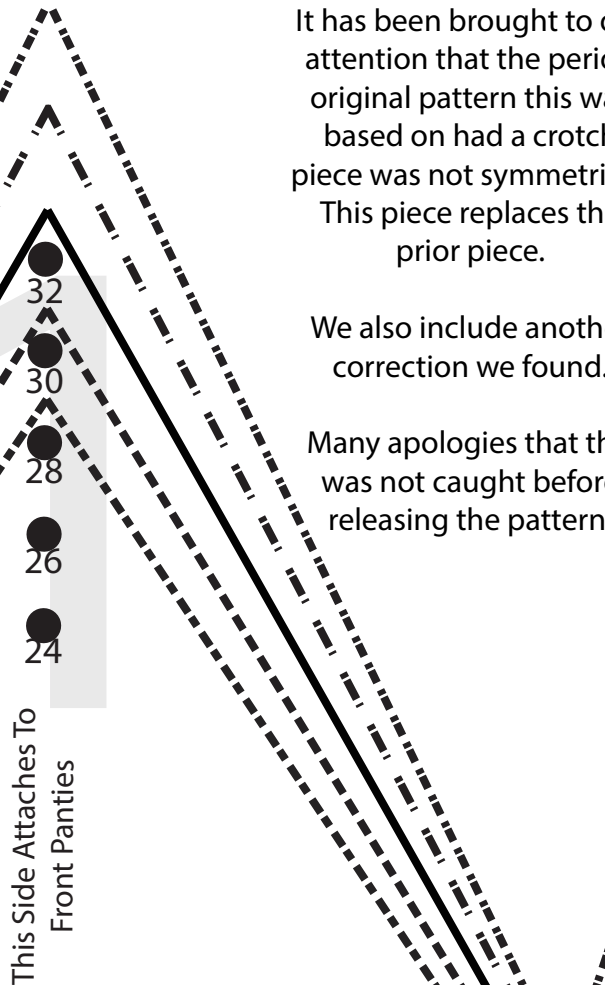
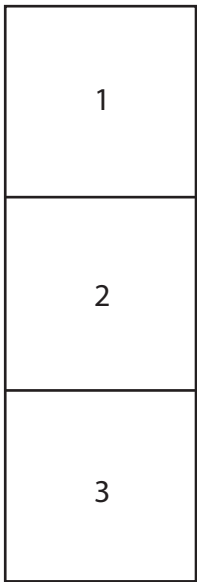
It has been brought to our attention that the period original pattern this was based on had a crotch piece that was not symmetrical. This piece replaces the prior piece.

We also include another correction we found.

Many apologies that this was not caught before releasing the pattern.

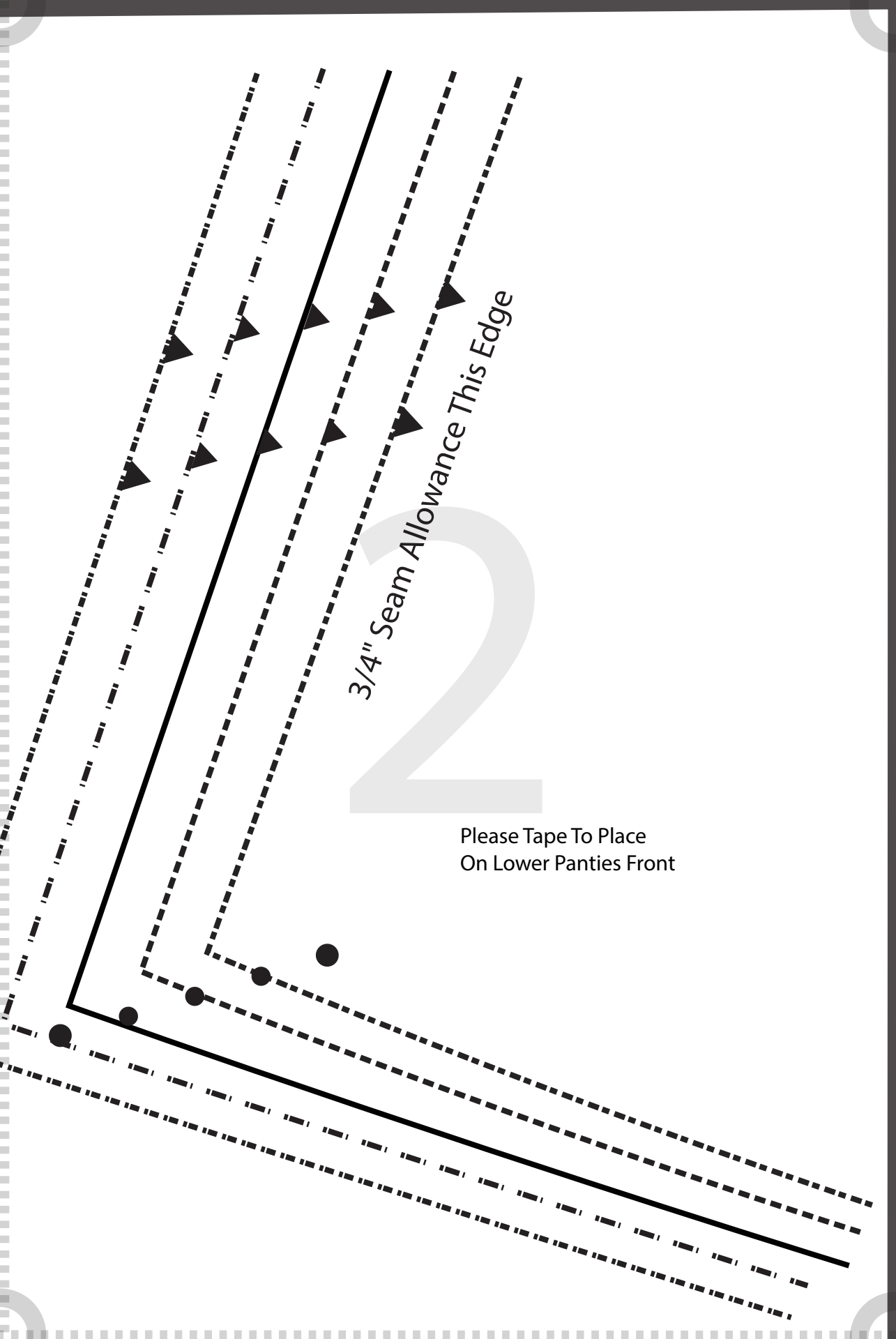
IMPORTANT!
PRINT THIS E-PATTERN AT
100% SCALE OR "ACTUAL
SIZE." DO NOT SELECT
"FIT" OR THE PATTERN
WILL NOT GO TOGETHER.

1" Grid for Scale



24 26 28 30 32

24 26 28 30 32



3/4" Seam Allowance This Edge

Please Tape To Place
On Lower Panties Front

Grainline

Panties Crotch
Cut 2

Waist 24-26-28-30-32

1940s Panties and Bloomers
Multisize

#4005

Seaming History

This Side Attaches To
Back Panties

32 30 28 26 24

32 30 28 26 24

24

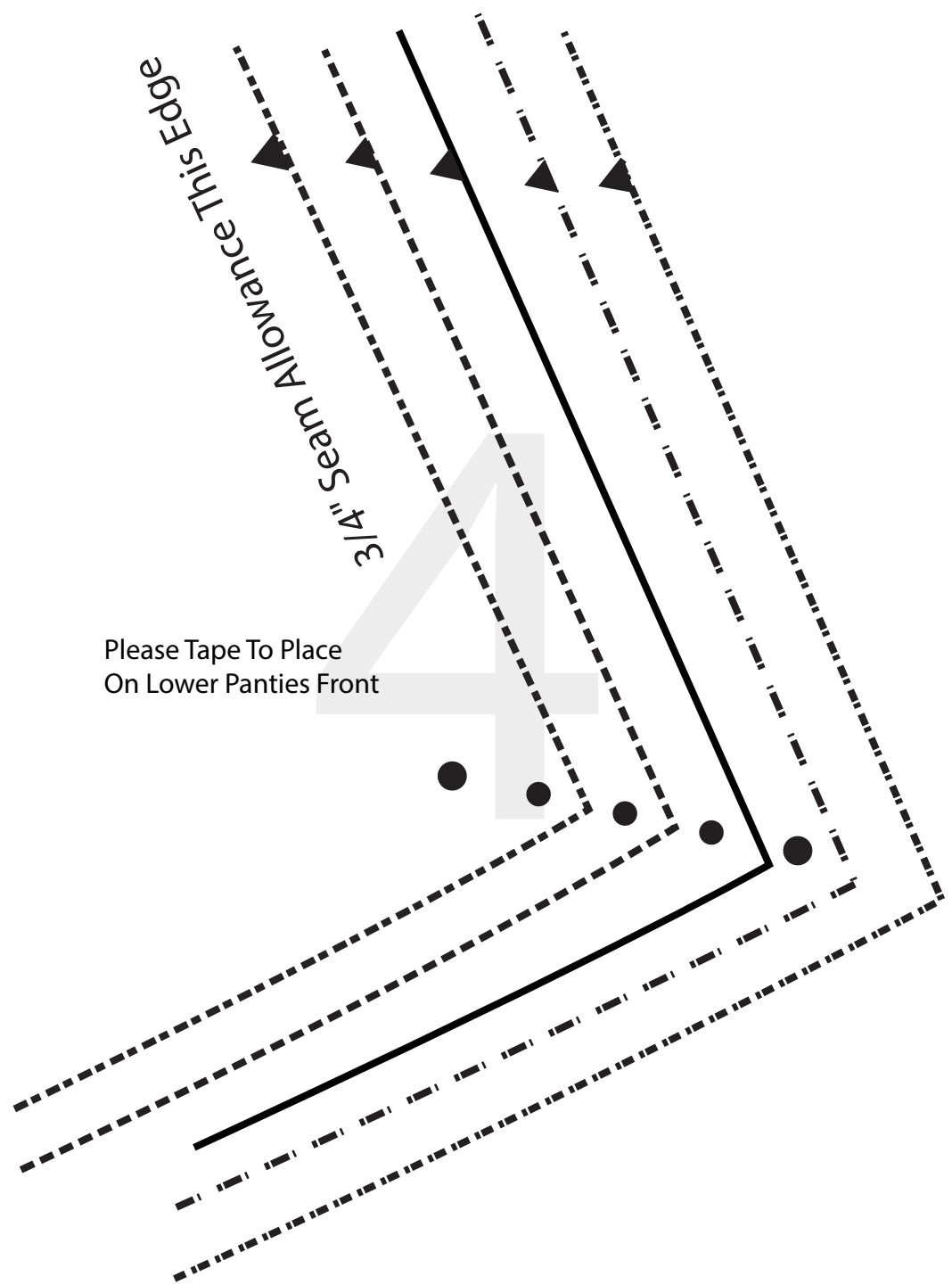
26

28

30

32

*



3/4" Seam Allowance This Edge

Please Tape To Place
On Lower Panties Front